



卓時檢測  
TIMEWAY TESTING LABORATORY



ISO/IEC17025 Accredited Lab.

Report No: 0811070-01

File reference No: 2008-12-23

Applicant: Shenzhen Swift Technology Co.,Ltd

Product: Radio Control System

Model No: T810

Brand Name: N/A

Test Standards: ETSI EN 300 440-1 v 1.3.1  
(2001-09)  
ETSI EN 300 440-2 v 1.1.2  
(2004-07)

Test result: The EMC testing has been performed on the submitted samples and found in compliance with council EMC Directive 2004/108/EC, 92/31/EEC and R & TTE Directive 1999/5/EC

Approved By

*Jack Chung*

Jack Chung  
EMC Manager

Dated: Dec 23, 2008

**Results appearing herein relate only to the sample tested**

**The technical reports is issued errors and omissions exempt and is subject to withdrawal at**

**TIMEWAY TECHNOLOGY DEVELOPMENT LIMITED(HONG KONG)**

Rm. 1803, King Centre, No.23 Dundas Street, Mongkok, Kln. HONG KONG

Tel (852)2626 1885

Fax (852)3012 1422



### **Special Statement:**

The testing quality ability of our laboratory meet with "Quality Law of People's Republic of China" Clause 19.

The testing quality system of our laboratory meets with ISO/IEC-17025 requirements, which is approved by CNAL. This approval result is accepted by MRA of APLAC.

Our test facility is recognized, certified, or accredited by the following organizations:

#### **CNAL-LAB Code: L2292**

The EMC Laboratory has been assessed and in compliance with CNAL/AC01:2002 accreditation criteria for testing Laboratories (identical to ISO/IEC 17025:1999 General Requirements) for the Competence of testing Laboratories.

#### **FCC-Registration No.: 899988**

The EMC Laboratory has been registered and fully described in a report filed with the (FCC) Federal Communications commission. The acceptance letter from the FCC is maintained in our files. Registration No.:899988.

#### **IC- Registration No.: IC5205A-01**

The EMC Laboratory has been registered and fully described in a report filed with the (IC) Industry Canada. The acceptance letter from the IC is maintained in our files. Registration No.: IC 5205A-01.

The report refers only to the sample tested and does not apply to the bulk.

This report is issued in confidence to the client and it will be strictly treated as such by the TIMEWAY TECHNOLOGY DEVELOPMENT LIMITED(HONG KONG). It may not be reproduced rather in its entirety or in part and it may not be used for adverting. The client to whom the report is issued may, however, show or send it . or a certified copy there of prepared by the TIMEWAY TECHNOLOGY DEVELOPMENT LIMITED(HONG KONG) to his customer. Supplier or others persons directly concerned. TIMEWAY TECHNOLOGY DEVELOPMENT LIMITED(HONG KONG) will not, without the consent of the client enter into any discussion of correspondence with any third party concerning the contents of the report.

In the event of the improper use of the report. The TIMEWAY TECHNOLOGY DEVELOPMENT LIMITED(HONG KONG) reserves the rights to withdraw it and to adopt any other remedies which may be appropriate.



**TEST REPORT**

Test Report Conclusion  
Content

<b>1.0</b>	<b>General Details</b> .....	4
1.1	Notes.....	4
1.2	Test Laboratory.....	4
1.3	Details of Applicant.....	4
1.4	Application Details.....	4
1.5	Test Item.....	5
1.6	Test Standards.....	5
1.7	Configuration of The EUT.....	6
1.8	EUT Modification.....	6
1.9	Test By.....	6
<b>2.0</b>	<b>Technical Test</b> .....	7
2.1	Summary of Test Result.....	7
2.2	Test Report.....	7
	Clause4.1 Transmitter Requirements.....	8
	Clause4.1.1Equivalent Isotropically Radiated Power (eirp).....	8
	Clause4.1.2 Permitted Range of Operating Frequencies.....	10
	Clause4.1.3 Spurious Emissions.....	11
	Clause4.1.4 Duty Cycle.....	12
	Clause 4.2 Receiver Requirements.....	13
	Clause 4.2.1 Adjacent Channel Selectivity – In Band.....	13
	Clause 4.2.2 Adjacent Band Selectivity.....	13
	Clause 4.2.2 Blocking or Desensitization.....	13
	Clause 5.3.2 Receiver Spurious Emissions.....	14
<b>3.0</b>	<b>CE Label</b> .....	15
<b>4.0</b>	<b>Photograph-Test Set up</b> .....	16
<b>5.0</b>	<b>Photograph-EUT</b> .....	17
<b>6.0</b>	<b>Test Equipments</b> .....	31

The report refers only to the sample tested and does not apply to the bulk.

This report is issued in confidence to the client and it will be strictly treated as such by the TIMEWAY TECHNOLOGY DEVELOPMENT LIMITED(HONG KONG). It may not be reproduced rather in its entirety or in part and it may not be used for adverting. The client to whom the report is issued may, however, show or send it . or a certified copy there of prepared by the TIMEWAY TECHNOLOGY DEVELOPMENT LIMITED(HONG KONG) to his customer. Supplier or others persons directly concerned. TIMEWAY TECHNOLOGY DEVELOPMENT LIMITED(HONG KONG) will not, without the consent of the client enter into any discussion of correspondence with any third party concerning the contents of the report.

In the event of the improper use of the report. The TIMEWAY TECHNOLOGY DEVELOPMENT LIMITED(HONG KONG) reserves the rights to withdraw it and to adopt any other remedies which may be appropriate.



## 1. General Information

### 1.1 Notes

The test results of this report relate exclusively to the test item specified in 1.5. The TIMEWAY Lab does not assume Responsibility for any conclusions and generalizations drawn from the test results with regard to other specimens or samples of the type of the equipment represented by the test item. The test report may only be reproduced or published in full. Reproduction or publication of extracts from the report requires the prior written approval of the TIMEWAY Lab.

### 1.2 Testing Laboratory

#### SHENZHEN TIMEWAY TECHNOLOGY CONSULTING CO LTD

East 5/Block 4, Anhua Industrial Zone, No.8,Tairan Rd. CheGongMiao, FuTian District, Shenzhen, CHINA

Tel: +86 755 83448688 Fax :+86 755 83442996

Internet: [www.timewaytech.com](http://www.timewaytech.com)

Site on File With the Federal Communications and Commission – United States

Registration Number: 899988

For 3m & 10 m OATS

Site Listed with Industry Canada of Ottawa, Canada

Registration Number: IC: 5205A-01

For 3m & 10 m OATS

### 1.3 Details of Applicant

Name:Shenzhen Swift Technology Co.,Ltd

Address: Room 303.Block 2 Zhongxin Industry Area.Chuangye Road.Nanshan.Shenzhen.Guanggong.China

### 1.4 Application Details

Date of Receipt of Application: November 11, 2008

Date of Receipt of Test Item: November 11, 2008

Date of Test: November 11, 2008~ December 24, 2008

The report refers only to the sample tested and does not apply to the bulk.

This report is issued in confidence to the client and it will be strictly treated as such by the TIMEWAY TECHNOLOGY DEVELOPMENT LIMITED(HONG KONG). It may not be reproduced rather in its entirety or in part and it may not be used for adverting. The client to whom the report is issued may, however, show or send it . or a certified copy there of prepared by the TIMEWAY TECHNOLOGY DEVELOPMENT LIMITED(HONG KONG) to his customer. Supplier or others persons directly concerned. TIMEWAY TECHNOLOGY DEVELOPMENT LIMITED(HONG KONG) will not, without the consent of the client enter into any discussion of correspondence with any third party concerning the contents of the report.

In the event of the improper use of the report. The TIMEWAY TECHNOLOGY DEVELOPMENT LIMITED(HONG KONG) reserves the rights to withdraw it and to adopt any other remedies which may be appropriate.



### 1.5 Test Item

Manufacturer: The same with applicant

Address: The same with applicant

Brand Name: N/A

Model No.: T810

Additional Model: N/A

Description: Radio Control System

### Additional Information

Frequency: 2403MHz-2479MHz

Number of Channels: 77

Antenna Designation: Dipole Antenna

Rating: DC12V (8 pcs AA Batteries) for Tx and DC9V for Rx

Power Supply: Model: YS04-120250U; Input: 100-240V~50Hz/60Hz; Output: 12V,2.5A

Operation Distance: N/A

Resolution: N/A

**Note: Classification according to CEPT/ERC Recommendation 70-03**

### 1.6 Test Standards

#### **ETSI EN 300 440-1 v 1.3.1 (2001-09)**

Electromagnetic compatibility and Radio spectrum Matters (ERM);

Short Range Devices (SRD);

Radio equipment to be used in the 1GHz to 40GHz frequency range;

Part 1: Technical characteristics and test methods

#### **ETSI EN 300 440-2 v 1.1.2 (2004-07)**

Electromagnetic compatibility and Radio spectrum Matters (ERM);

Short Range Devices (SRD);

Radio equipment to be used in the 1GHz to 40 GHz frequency range;

Part 3: Harmonized EN under article 3.2 of the R&TTE Directive

Note: All radiated measurements were made in all three orthogonal planes. The values reported are the maximum values.

The report refers only to the sample tested and does not apply to the bulk.

This report is issued in confidence to the client and it will be strictly treated as such by the TIMEWAY TECHNOLOGY DEVELOPMENT LIMITED(HONG KONG). It may not be reproduced rather in its entirety or in part and it may not be used for advertising. The client to whom the report is issued may, however, show or send it . or a certified copy there of prepared by the TIMEWAY TECHNOLOGY DEVELOPMENT LIMITED(HONG KONG) to his customer. Supplier or others persons directly concerned. TIMEWAY TECHNOLOGY DEVELOPMENT LIMITED(HONG KONG) will not, without the consent of the client enter into any discussion of correspondence with any third party concerning the contents of the report.

In the event of the improper use of the report. The TIMEWAY TECHNOLOGY DEVELOPMENT LIMITED(HONG KONG) reserves the rights to withdraw it and to adopt any other remedies which may be appropriate.



**TEST REPORT**

**1.7 Configuration of The EUT**

The EUT was configured according to **CISPR16**. All interface ports were connected to the appropriate peripherals. All peripherals and cables are listed below.

**A. EUT**

Device	Manufacturer	Model
Radio Control System	Shenzhen Swift Technology Co.,Ltd	T810

**B. Internal Devices**

Device	Manufacturer	Model
N/A		

**C. Peripherals**

Device	Manufacturer	Model	Cable
N/A			

**1.8 EUT Modifications**

No modification by Shenzhen Timeway Technology Consulting Co., Ltd

**Tests or Witness Test Engineering**

Test By: \_\_\_\_\_

Printing Name: Terry Tang

The report refers only to the sample tested and does not apply to the bulk. This report is issued in confidence to the client and it will be strictly treated as such by the TIMEWAY TECHNOLOGY DEVELOPMENT LIMITED(HONG KONG). It may not be reproduced rather in its entirety or in part and it may not be used for adverting. The client to whom the report is issued may, however, show or send it . or a certified copy there of prepared by the TIMEWAY TECHNOLOGY DEVELOPMENT LIMITED(HONG KONG) to his customer. Supplier or others persons directly concerned. TIMEWAY TECHNOLOGY DEVELOPMENT LIMITED(HONG KONG) will not, without the consent of the client enter into any discussion of correspondence with any third party concerning the contents of the report. In the event of the improper use of the report. The TIMEWAY TECHNOLOGY DEVELOPMENT LIMITED(HONG KONG) reserves the rights to withdraw it and to adopt any other remedies which may be appropriate.



**TEST REPORT**

**2. Technical Test**

**2.1 Summary of Test Results**

No deviations from the technical specification(s) were ascertained in the course of the tests Performed	
Final Verdict: (Only "Passed" if all Measurements are "Passed")	<b>Pass</b>

**2.2 Test Report**

Test Report Reference

List of Measurements	
Parameter to be Measured	Clause
<b>Transmitter Parameters</b>	
Transmitter Requirements	Clause 4.1
Equivalent Isotropically Radiated Power (eirp)	Clause 4.1.1
Permitted Range of Operating Frequencies	Clause 4.1.2
Spurious Emissions	Clause 4.1.3
Duty Cycle	Clause 4.1.4
<b>Receiver Parameters</b>	
Receiver Requirements	Clause 4.2
Adjacent Channel Selectivity-in Band	Clause 4.2.1
Adjacent Band Selectivity	Clause 4.2.2
Blocking or Desensitisation	Clause 4.2.3
Receiver Spurious Emissions	Clause 4.2.4

Note: The clause numbers are referenced to ETSI EN 300 440-2 v 1.1.1 (2001-09).

The report refers only to the sample tested and does not apply to the bulk.

This report is issued in confidence to the client and it will be strictly treated as such by the TIMEWAY TECHNOLOGY DEVELOPMENT LIMITED(HONG KONG). It may not be reproduced rather in its entirety or in part and it may not be used for adverting. The client to whom the report is issued may, however, show or send it . or a certified copy there of prepared by the TIMEWAY TECHNOLOGY DEVELOPMENT LIMITED(HONG KONG) to his customer. Supplier or others persons directly concerned. TIMEWAY TECHNOLOGY DEVELOPMENT LIMITED(HONG KONG) will not, without the consent of the client enter into any discussion of correspondence with any third party concerning the contents of the report.

In the event of the improper use of the report. The TIMEWAY TECHNOLOGY DEVELOPMENT LIMITED(HONG KONG) reserves the rights to withdraw it and to adopt any other remedies which may be appropriate.



#### **Clause 4.1 Transmitter Requirements**

The transmitter with a dedicated antenna.

##### **Clause 4.1.1 Equivalent Isotropically Radiated Power (eirp)**

For Transmitter Tx

EIRP is calculated by method described under EN 300 440-1 sub clause 7.1.2.1,

##### **Conducted measurements**

In view of the low power levels of the equipment to be tested under the present document, conducted measurements may be applied to equipment provided with an antenna connector. Where the equipment to be tested does not provide a suitable termination, a coupler or attenuator that does provide the correct termination value shall be used. The equivalent isotropically radiated power is then calculated from the measured value, the known antenna gain, relative to an isotropic antenna, and if applicable, any losses due to cables and connectors in the measurement system.

##### **Radiated measurements**

Radiated measurements shall be performed with the aid of a test antenna and measurement receiver as described in annex A. The test antenna and measurement receiver, spectrum analyser or selective voltmeter, shall be calibrated according to the procedure defined in this annex. The equipment to be measured and the test antenna shall be oriented to obtain the maximum emitted power level. This position shall be recorded in the measurement report. The frequency range shall be measured in this position. Preferably, radiated measurements shall be performed in an anechoic chamber. For other test sites corrections may be needed (see annex A).

- a) A test site which fulfils the requirements of the specified frequency range of this measurement shall be used.
- b) The transmitter under test shall be placed on the support in its standard position (clause A.1.2) and switched on.
- c) The test antenna shall be oriented initially for vertical polarization unless otherwise stated. The test antenna shall be raised or lowered, through the specified height range until the maximum signal level is detected on the measuring receiver. The test antenna need not be raised or lowered if the measurement is carried out on a test site according to clause A.3.
- d) The transmitter shall be rotated through 360° about a vertical axis to maximize the received signal.
- e) The test antenna shall be raised or lowered again, if necessary, through the specified height range until a maximum is obtained. This level shall be recorded.  
(This maximum may be a lower value than the value obtainable at heights outside the specified limits).
- f) This measurement shall be repeated for horizontal polarization.
- g) The substitution antenna, shall replace the transmitter antenna in the same position and in vertical polarization. The frequency of the signal generator shall be adjusted to the transmitter (carrier) frequency.
- h) Steps c) to f) shall be repeated.
- i) The input signal to the substitution antenna shall be adjusted in level until an equal or a known related level to that detected from the transmitter is obtained in the test receiver.
- j) This measurement shall be repeated with horizontal polarization.

The report refers only to the sample tested and does not apply to the bulk.

This report is issued in confidence to the client and it will be strictly treated as such by the TIMEWAY TECHNOLOGY DEVELOPMENT LIMITED(HONG KONG). It may not be reproduced in its entirety or in part and it may not be used for advertising. The client to whom the report is issued may, however, show or send it or a certified copy thereof prepared by the TIMEWAY TECHNOLOGY DEVELOPMENT LIMITED(HONG KONG) to his customer. Supplier or others persons directly concerned. TIMEWAY TECHNOLOGY DEVELOPMENT LIMITED(HONG KONG) will not, without the consent of the client enter into any discussion of correspondence with any third party concerning the contents of the report.

In the event of the improper use of the report. The TIMEWAY TECHNOLOGY DEVELOPMENT LIMITED(HONG KONG) reserves the rights to withdraw it and to adopt any other remedies which may be appropriate.

**TEST REPORT**

k) The radiated power is equal to the power supplied by the signal generator, increased by the known relationship if necessary and after corrections due to the gain of the substitution antenna and the cable loss between the signals Generator and the substitution antenna.

Test Conditions		Transmitter Power (dBm) EIRP					
		Low Freq. 2403MHz		Mid Freq. 2441MHz		High Freq. 2479MHz	
T <sub>nor</sub> (25°C)	V <sub>nor</sub> (12)	Pk	<b>-7.59dBm</b>	Pk	<b>-5.76 dBm</b>	Pk	<b>-6.36 dBm</b>
T <sub>min</sub> (-10°C)	V <sub>min</sub> (10.2)	Pk	<b>-7.18 dBm</b>	Pk	<b>-5.89 dBm</b>	Pk	<b>-6.21 dBm</b>
	V <sub>max</sub> (13.8)	Pk	<b>-7.23dBm</b>	pk	<b>-5.68 dBm</b>	Pk	<b>-6.43 dBm</b>
T <sub>max</sub> (+55°C)	V <sub>min</sub> (10.2)	Pk	<b>-7.35 dBm</b>	Pk	<b>-5.45 dBm</b>	Pk	<b>-6.68 dBm</b>
	V <sub>max</sub> (13.8)	pk	<b>-7.29dBm</b>	Pk	<b>-5.56 dBm</b>	pk	<b>-6.51 dBm</b>

Test Conditions		Transmitter Power (dBm) EIRP					
		Low Freq. 2403MHz		Mid Freq. 2441MHz		High Freq. 2479MHz	
T <sub>nor</sub> (25°C)	V <sub>nor</sub> (230)	Pk	<b>-7.43 dBm</b>	Pk	<b>-5.65 dBm</b>	Pk	<b>-6.42 dBm</b>
T <sub>min</sub> (-10°C)	V <sub>min</sub> (207)	Pk	<b>-7.23 dBm</b>	Pk	<b>-5.59 dBm</b>	Pk	<b>-6.34 dBm</b>
	V <sub>max</sub> (253)	Pk	<b>-7.41 dBm</b>	pk	<b>-5.71 dBm</b>	Pk	<b>-6.29 dBm</b>
T <sub>max</sub> (+55°C)	V <sub>min</sub> (207)	Pk	<b>-7.19 dBm</b>	Pk	<b>-5.61 dBm</b>	Pk	<b>-6.57 dBm</b>
	V <sub>max</sub> (253)	pk	<b>-7.32 dBm</b>	Pk	<b>-5.68 dBm</b>	pk	<b>-6.48 dBm</b>

Note:

- (1) The EUT is a stand-alone radio device (see the clause 5.2.1 of EN 300 440-1). The EUT is powered by the adaptor and battery. So, the AC power and DC power source are used as the extreme voltage source. (see clause 5.3.2.1 of EN 300 440-1).
- (2) The value of table is worst case during test condition, includes different combinations of transmitter rate antenna polarity and temperature.

The report refers only to the sample tested and does not apply to the bulk.

This report is issued in confidence to the client and it will be strictly treated as such by the TIMEWAY TECHNOLOGY DEVELOPMENT LIMITED(HONG KONG). It may not be reproduced rather in its entirety or in part and it may not be used for advertising. The client to whom the report is issued may, however, show or send it . or a certified copy there of prepared by the TIMEWAY TECHNOLOGY DEVELOPMENT LIMITED(HONG KONG) to his customer. Supplier or others persons directly concerned. TIMEWAY TECHNOLOGY DEVELOPMENT LIMITED(HONG KONG) will not, without the consent of the client enter into any discussion of correspondence with any third party concerning the contents of the report.

In the event of the improper use of the report. The TIMEWAY TECHNOLOGY DEVELOPMENT LIMITED(HONG KONG) reserves the rights to withdraw it and to adopt any other remedies which may be appropriate.



**TEST REPORT**

**Limits: EN 300 440-1, Clause 7.1.3**

**Table 4: Maximum radiated peak power (eirp)**

Power Class (note 1)	Power level (conducted or radiated)
8	10 mW
9	25 mW
11	100 mW
12	500 mW (see note 2)
13	1 W
14	2 W
14a	4 W (see note 2)
NOTE 1: Class designation is based on CEPT/ERC Recommendation 70-03 [1].	
NOTE 2: For RFID applications, see annex C of the present document.	

**Clause 4.1.2 Permitted Range of Operating Frequencies**

For Transmitter

Test Conditions		Frequency(MHz) at which-30 dBm occurs	
		Low Frequency (f <sub>L</sub> ) 2403MHz	High Frequency (f <sub>H</sub> ) 2479MHz
T <sub>nor</sub> (25°C)	V <sub>nor</sub> (12.0)	2402.46	2480.66
T <sub>min</sub> (-10°C)	V <sub>nor</sub> (12.0)	2402.45	2480.50
T <sub>min</sub> (-10°C)	V <sub>nor</sub> (13.8)	2402.43	2480.59
T <sub>min</sub> (-10°C)	V <sub>nor</sub> (10.2)	2402.41	2480.57
T <sub>max</sub> (+55°C)	V <sub>nor</sub> (12.0)	2402.46	2480.64
T <sub>max</sub> (+55°C)	V <sub>nor</sub> (13.8)	2402.44	2480.64
T <sub>max</sub> (+55°C)	V <sub>nor</sub> (10.2)	2402.43	2480.71

Note:

- (1) The EUT is a stand-alone radio device (see the clause 5.2.1 of EN 300 440-1). The EUT is powered by the adaptor . So, the AC power is used as the extreme voltage source. (see clause 5.3.2.1 of EN 300 440-1).
- (2) The value of table is worst case during test condition, includes different combinations of transmitter rate antenna polarity and temperature.

Limits EN 300 440-1 Clause 7.2.4

Under Normal Test Conditions	F <sub>L</sub> >2400MHz, f <sub>H</sub> <2483.5
------------------------------	---

The report refers only to the sample tested and does not apply to the bulk.

This report is issued in confidence to the client and it will be strictly treated as such by the TIMEWAY TECHNOLOGY DEVELOPMENT LIMITED(HONG KONG). It may not be reproduced rather in its entirety or in part and it may not be used for adverting. The client to whom the report is issued may, however, show or send it . or a certified copy there of prepared by the TIMEWAY TECHNOLOGY DEVELOPMENT LIMITED(HONG KONG) to his customer. Supplier or others persons directly concerned. TIMEWAY TECHNOLOGY DEVELOPMENT LIMITED(HONG KONG) will not, without the consent of the client enter into any discussion of correspondence with any third party concerning the contents of the report.

In the event of the improper use of the report. The TIMEWAY TECHNOLOGY DEVELOPMENT LIMITED(HONG KONG) reserves the rights to withdraw it and to adopt any other remedies which may be appropriate.



**Clause 4.1.3 Spurious Emissions  
(Radiated)**

Product	Transmitter	Test Mode	Low , High and Middle Channel
Test Item	Spurious Emissions data	Temperature	25°C
Test Voltage	DC12V	Humidity	56%RH
Test Result	PASS		

Note:

1. Measurements were done on low & high channels, the worst case are submitted in the report.
2. The spurious emissions were done with different settings, using the relevant pre-amplifiers for the relevant frequency ranges.
3. The measured frequency is from 25MHz to 10 times the carrier frequency. For the spurious emissions below 1G, please see the radiated emissions data in the report EMC0811070-02

**Low Channel (2403MHz)**

Lowest Frequency			Highest Frequency		
F(MHz)	Band-Width(kHz)	Level (dBm)	F(MHz)	Band-Width(kHz)	Level(dBm)
--	--	NF	4806	1000	-56.83
<b>Measurement Uncertainty</b>		<b>4. 7dB</b>			

**Middle Channel (2441MHz)**

Lowest Frequency			Highest Frequency		
F(MHz)	Band-Width(kHz)	Level (dBm)	F(MHz)	Band-Width(kHz)	Level(dBm)
--	--	NF	4882	1000	-58.59
<b>Measurement Uncertainty</b>		<b>4. 7dB</b>			

**High Channel (2479MHz)**

Lowest Frequency			Highest Frequency		
F(MHz)	Band-Width(kHz)	Level (dBm)	F(MHz)	Band-Width(kHz)	Level(dBm)
--	--	NF	4958	1000	-52.63
<b>Measurement Uncertainty</b>		<b>4. 7dB</b>			

Note: NF = No Significant Peak was Found.

Limits EN 300 440-1, Clause 7.3.7

The report refers only to the sample tested and does not apply to the bulk.

This report is issued in confidence to the client and it will be strictly treated as such by the TIMEWAY TECHNOLOGY DEVELOPMENT LIMITED(HONG KONG). It may not be reproduced rather in its entirety or in part and it may not be used for advertising. The client to whom the report is issued may, however, show or send it . or a certified copy there of prepared by the TIMEWAY TECHNOLOGY DEVELOPMENT LIMITED(HONG KONG) to his customer. Supplier or others persons directly concerned. TIMEWAY TECHNOLOGY DEVELOPMENT LIMITED(HONG KONG) will not, without the consent of the client enter into any discussion of correspondence with any third party concerning the contents of the report.

In the event of the improper use of the report. The TIMEWAY TECHNOLOGY DEVELOPMENT LIMITED(HONG KONG) reserves the rights to withdraw it and to adopt any other remedies which may be appropriate.



**Table 6: Radiated spurious emissions**

State	47 MHz to 74 MHz 87,5 MHz to 118 MHz 174 MHz to 230 MHz 470 MHz to 862 MHz	Other frequencies ≤ 1 000 MHz	Frequencies > 1 000 MHz
Operating	4 nW	250 nW	1 μW
Standby	2 nW	2 nW	20 nW

**Clause 4.1.4 Duty Cycle  
 For Transmitter**

The EUT is wireless monitor system intends to use in household and office or related application, It's declared by the manufacturer as a duty ratio up to 100%

Product	Transmitter	Test Mode	Transmitter Operating
Test Item	Spurious Emissions data	Temperature	25°C
Test Voltage	DC12V	Humidity	56%RH
Test Result	PASS		

**X = Duty Cycle Ratio Up to 100%**

**Limits EN 300 440-1, Clause 7.4.3**

**Table 7**

Duty cycle Class	Duty cycle ratio
1	≤ 0,1 %
2	≤ 1,0 %
3	≤ 10 %
4	Up to 100 %

The report refers only to the sample tested and does not apply to the bulk.

This report is issued in confidence to the client and it will be strictly treated as such by the TIMEWAY TECHNOLOGY DEVELOPMENT LIMITED(HONG KONG). It may not be reproduced rather in its entirety or in part and it may not be used for adverting. The client to whom the report is issued may, however, show or send it . or a certified copy there of prepared by the TIMEWAY TECHNOLOGY DEVELOPMENT LIMITED(HONG KONG) to his customer. Supplier or others persons directly concerned. TIMEWAY TECHNOLOGY DEVELOPMENT LIMITED(HONG KONG) will not, without the consent of the client enter into any discussion of correspondence with any third party concerning the contents of the report.

In the event of the improper use of the report. The TIMEWAY TECHNOLOGY DEVELOPMENT LIMITED(HONG KONG) reserves the rights to withdraw it and to adopt any other remedies which may be appropriate.



**Clause 4.2 Receiver Requirements**  
**For Receiver**

**Receiver Classification, Table 2 of EN300 440-1.**

**Table 2**

Receiver class	Relevant receiver clauses	Risk assessment of receiver performance
1	8.1, 8.2, 8.3 and 8.4	Highly reliable SRD communication media; e.g. serving human life inherent systems (may result in a physical risk to a person).
2	8.3 and 8.4	Medium reliable SRD communication media e.g. causing Inconvenience to persons, which cannot simply be overcome by other means.
3	8.4	Standard reliable SRD communication media e.g. Inconvenience to persons, which can simply be overcome by other means (e.g. manual).
NOTE: With reference to the present document manufacturers are recommended to declare classification of their devices in accordance with table 2 and EN 300 440-2 [5] clause 4.2, as relevant. In particular where an SRD which may have an inherent safety of human life implications, manufacturers and users should pay particular attention to the potential for interference from other systems operating in the same or adjacent bands.		

Note: The EUT (Rx part) belong to Class 3.

**Clause 4.2.1 Adjacent Channel Selectivity-in Band**  
**For Receiver**

Not applicable , Since the test applies to Class 1 receivers only, Please refer to clause 4.1.1 of EN300 300 440-2.

**Clause 4.2.2 Adjacent Band Selectivity**  
**For Receiver**

Not applicable, Since the test applies to Class 1 receivers only, Please refer to clause 4.1.1 of EN300 300 440-2.

**Clause 4.2.3 Blocking or Desensitization**  
**For Receiver**

Not applicable, Since the test applies to Class 1 and Class 2 receivers only, Please refer to clause 4.1.1 of EN300 300 440-2.

The report refers only to the sample tested and does not apply to the bulk.  
This report is issued in confidence to the client and it will be strictly treated as such by the TIMEWAY TECHNOLOGY DEVELOPMENT LIMITED(HONG KONG). It may not be reproduced rather in its entirety or in part and it may not be used for advertising. The client to whom the report is issued may, however, show or send it . or a certified copy there of prepared by the TIMEWAY TECHNOLOGY DEVELOPMENT LIMITED(HONG KONG) to his customer. Supplier or others persons directly concerned. TIMEWAY TECHNOLOGY DEVELOPMENT LIMITED(HONG KONG) will not, without the consent of the client enter into any discussion of correspondence with any third party concerning the contents of the report.  
In the event of the improper use of the report. The TIMEWAY TECHNOLOGY DEVELOPMENT LIMITED(HONG KONG) reserves the rights to withdraw it and to adopt any other remedies which may be appropriate.



**Clause 5.3.2 Receiver Spurious Emissions  
(Radiated)**

Product	Receiver	Test Mode	Low , High and Middle Channel
Test Item	Spurious Emissions data	Temperature	25°C
Test Voltage	DC9V	Humidity	56%RH
Test Result	PASS		

Note:

1. Measurements were done on low & high channels, the worst case are submitted in the test report.
2. The receiver spurious emissions were done with different settings, using the relevant and pre-amplifiers for the relevant frequency ranges.

Lowest Frequency			Highest Frequency		
F(MHz)	Band-Width(kHz)	Level (dBm)	F(MHz)	Band-Width(kHz)	Level(dBm)
--	--	NF	-	-	NF
--	--	NF	-	-	NF
<b>Measurement Uncertainty</b>		<b>4. 7dB</b>			

Note: All reading are peak; Scan form 25MHz to 25GHz, find the maximum radiation frequency to measure.

Note: NF = No Significant Peak was Found

**Limits EN 300 440-1, Clause 8.4.5**

Frequency Range	Limit (dBm)
25 MHz ~ 1 GHz	-57 dBm
Above 1 Ghz ~ 12.75 GHz	-47 dBm

Note:The power of any spurious emission shall not exceed 2 nW in the range 25 MHz to 1 GHz and shall not exceed20 nW on frequencies above 1 GHz.

The report refers only to the sample tested and does not apply to the bulk.

This report is issued in confidence to the client and it will be strictly treated as such by the TIMEWAY TECHNOLOGY DEVELOPMENT LIMITED(HONG KONG). It may not be reproduced rather in its entirety or in part and it may not be used for adverting. The client to whom the report is issued may, however, show or send it . or a certified copy there of prepared by the TIMEWAY TECHNOLOGY DEVELOPMENT LIMITED(HONG KONG) to his customer. Supplier or others persons directly concerned. TIMEWAY TECHNOLOGY DEVELOPMENT LIMITED(HONG KONG) will not, without the consent of the client enter into any discussion of correspondence with any third party concerning the contents of the report.

In the event of the improper use of the report. The TIMEWAY TECHNOLOGY DEVELOPMENT LIMITED(HONG KONG) reserves the rights to withdraw it and to adopt any other remedies which may be appropriate.



### 3.0 Product Labelling

CE Mark label specification

Text of the mark is black or white in color and is left justified. Labels are printed in indelible ink on permanent adhesive backing and shall be affixed at a conspicuous location on the EUT or silk-screened onto the EUT.

**CE 0678**

Mark Location: Rear enclosure

The report refers only to the sample tested and does not apply to the bulk.

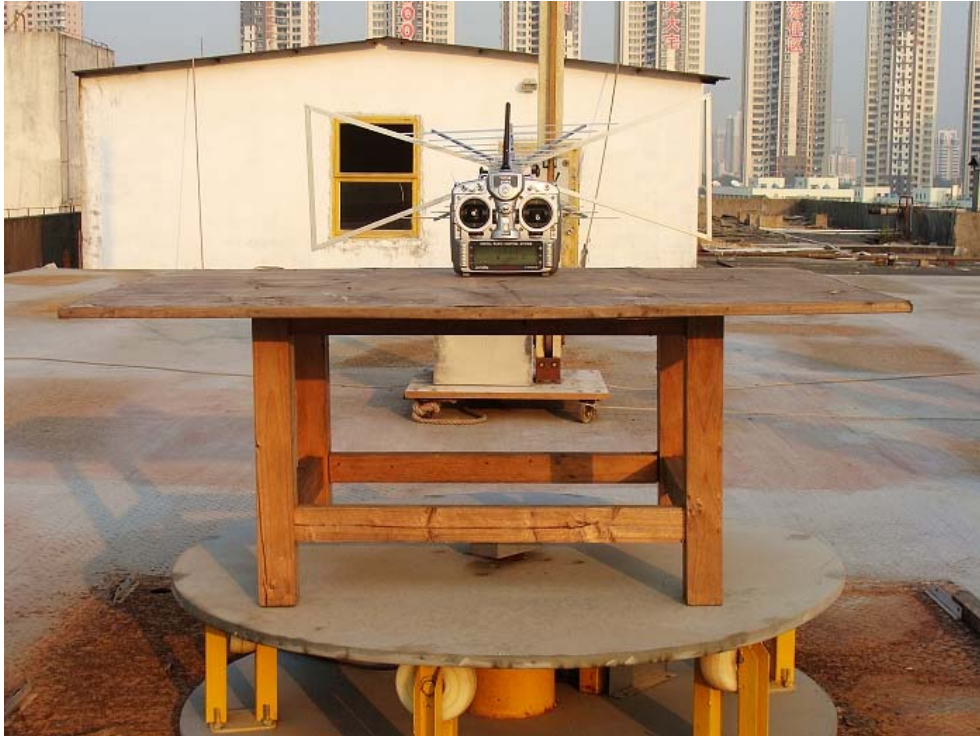
This report is issued in confidence to the client and it will be strictly treated as such by the TIMEWAY TECHNOLOGY DEVELOPMENT LIMITED(HONG KONG). It may not be reproduced in its entirety or in part and it may not be used for advertising. The client to whom the report is issued may, however, show or send it or a certified copy thereof prepared by the TIMEWAY TECHNOLOGY DEVELOPMENT LIMITED(HONG KONG) to his customer. Supplier or other persons directly concerned. TIMEWAY TECHNOLOGY DEVELOPMENT LIMITED(HONG KONG) will not, without the consent of the client enter into any discussion of correspondence with any third party concerning the contents of the report.

In the event of the improper use of the report. The TIMEWAY TECHNOLOGY DEVELOPMENT LIMITED(HONG KONG) reserves the rights to withdraw it and to adopt any other remedies which may be appropriate.

#### 4. Photographs – Test Setup

---

##### Radiated emission test view



The report refers only to the sample tested and does not apply to the bulk.

This report is issued in confidence to the client and it will be strictly treated as such by the TIMEWAY TECHNOLOGY DEVELOPMENT LIMITED(HONG KONG). It may not be reproduced rather in its entirety or in part and it may not be used for advertising. The client to whom the report is issued may, however, show or send it . or a certified copy there of prepared by the TIMEWAY TECHNOLOGY DEVELOPMENT LIMITED(HONG KONG) to his customer. Supplier or others persons directly concerned. TIMEWAY TECHNOLOGY DEVELOPMENT LIMITED(HONG KONG) will not, without the consent of the client enter into any discussion of correspondence with any third party concerning the contents of the report.

In the event of the improper use of the report. The TIMEWAY TECHNOLOGY DEVELOPMENT LIMITED(HONG KONG) reserves the rights to withdraw it and to adopt any other remedies which may be appropriate.

## 5. Photographs - EUT

Outside View (Tx)



The report refers only to the sample tested and does not apply to the bulk.

This report is issued in confidence to the client and it will be strictly treated as such by the TIMEWAY TECHNOLOGY DEVELOPMENT LIMITED(HONG KONG). It may not be reproduced rather in its entirety or in part and it may not be used for adverting. The client to whom the report is issued may, however, show or send it . or a certified copy there of prepared by the TIMEWAY TECHNOLOGY DEVELOPMENT LIMITED(HONG KONG) to his customer. Supplier or others persons directly concerned. TIMEWAY TECHNOLOGY DEVELOPMENT LIMITED(HONG KONG) will not, without the consent of the client enter into any discussion of correspondence with any third party concerning the contents of the report.

In the event of the improper use of the report. The TIMEWAY TECHNOLOGY DEVELOPMENT LIMITED(HONG KONG) reserves the rights to withdraw it and to adopt any other remedies which may be appropriate.



Outside View (Tx)



The report refers only to the sample tested and does not apply to the bulk.

This report is issued in confidence to the client and it will be strictly treated as such by the TIMEWAY TECHNOLOGY DEVELOPMENT LIMITED(HONG KONG). It may not be reproduced rather in its entirety or in part and it may not be used for advertizing. The client to whom the report is issued may, however, show or send it . or a certified copy there of prepared by the TIMEWAY TECHNOLOGY DEVELOPMENT LIMITED(HONG KONG) to his customer. Supplier or others persons directly concerned. TIMEWAY TECHNOLOGY DEVELOPMENT LIMITED(HONG KONG) will not, without the consent of the client enter into any discussion of correspondence with any third party concerning the contents of the report.

In the event of the improper use of the report. The TIMEWAY TECHNOLOGY DEVELOPMENT LIMITED(HONG KONG) reserves the rights to withdraw it and to adopt any other remedies which may be appropriate.



Interior View (Tx)



The report refers only to the sample tested and does not apply to the bulk.

This report is issued in confidence to the client and it will be strictly treated as such by the TIMEWAY TECHNOLOGY DEVELOPMENT LIMITED(HONG KONG). It may not be reproduced rather in its entirety or in part and it may not be used for advertising. The client to whom the report is issued may, however, show or send it . or a certified copy there of prepared by the TIMEWAY TECHNOLOGY DEVELOPMENT LIMITED(HONG KONG) to his customer. Supplier or others persons directly concerned. TIMEWAY TECHNOLOGY DEVELOPMENT LIMITED(HONG KONG) will not, without the consent of the client enter into any discussion of correspondence with any third party concerning the contents of the report.

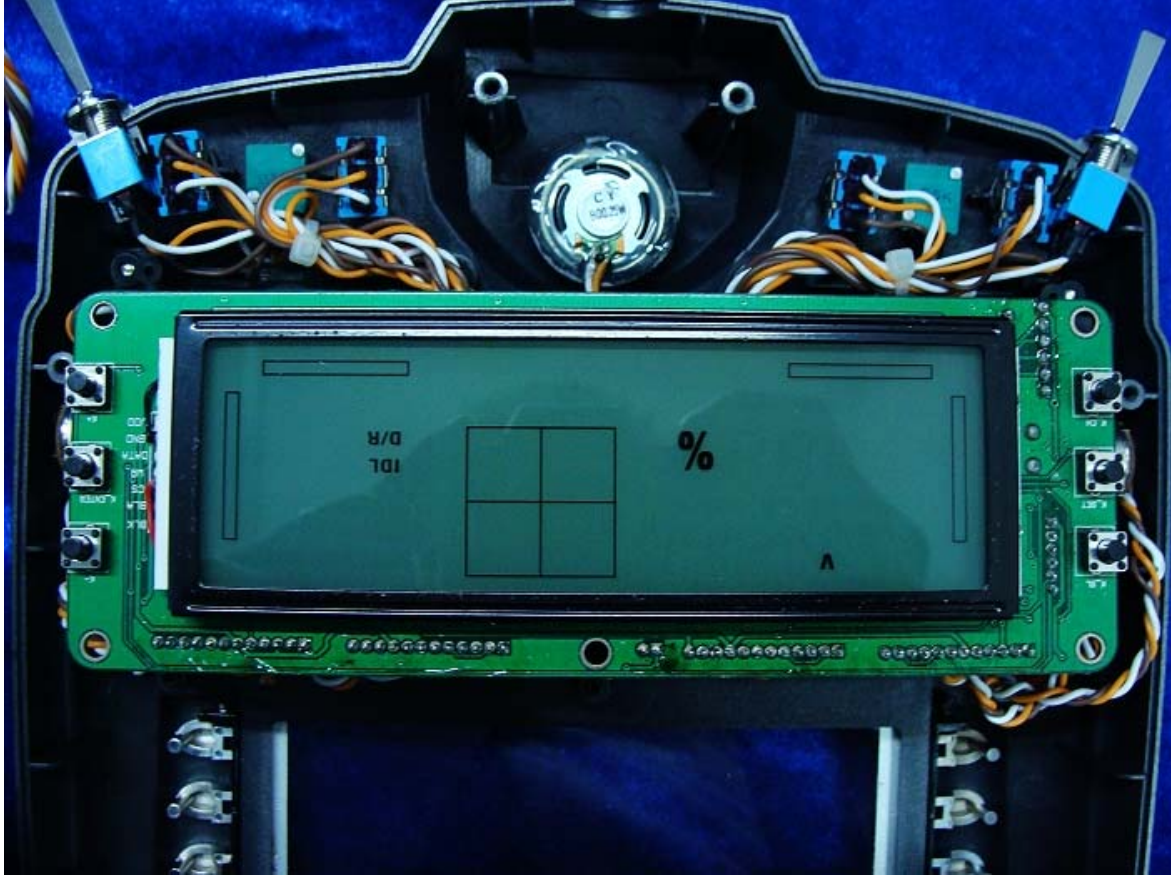
In the event of the improper use of the report. The TIMEWAY TECHNOLOGY DEVELOPMENT LIMITED(HONG KONG) reserves the rights to withdraw it and to adopt any other remedies which may be appropriate.





**TEST REPORT**

Interior View (Tx)



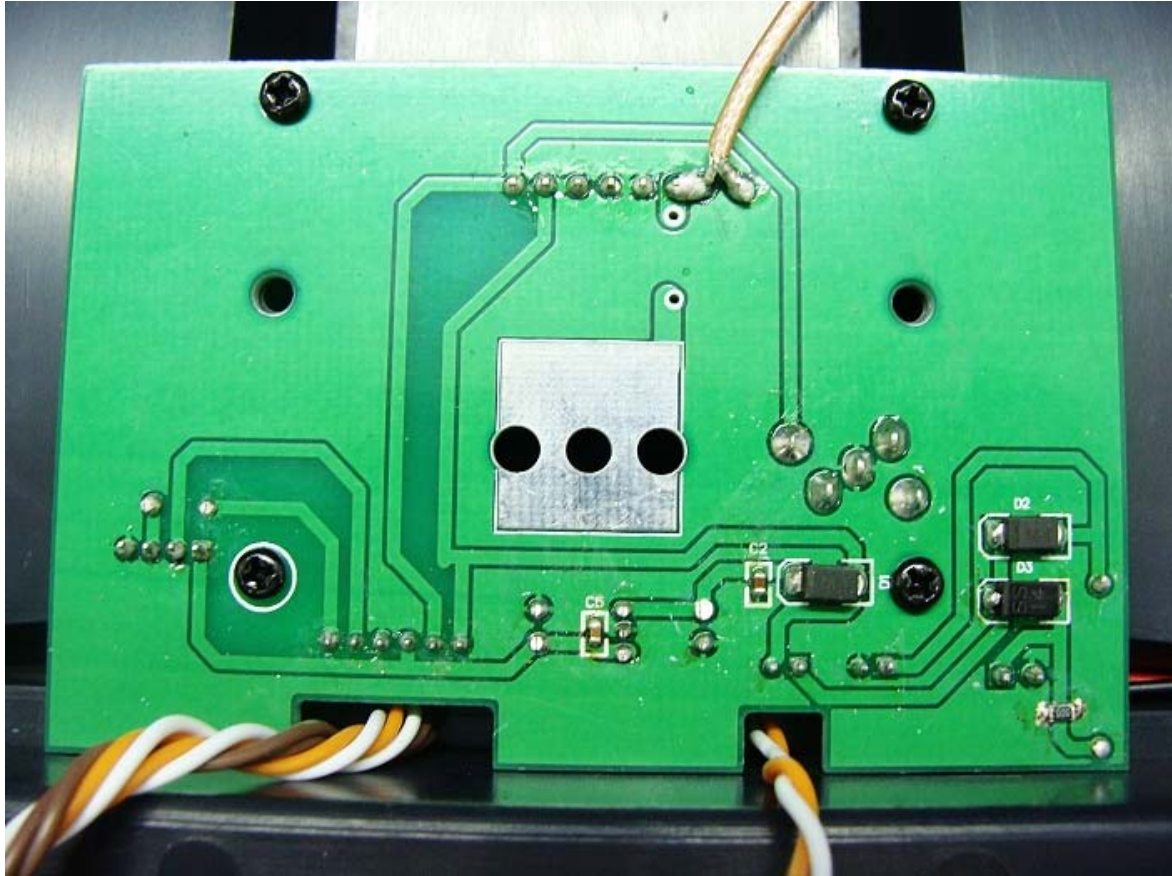
The report refers only to the sample tested and does not apply to the bulk.

This report is issued in confidence to the client and it will be strictly treated as such by the TIMEWAY TECHNOLOGY DEVELOPMENT LIMITED(HONG KONG). It may not be reproduced rather in its entirety or in part and it may not be used for adverting. The client to whom the report is issued may, however, show or send it . or a certified copy there of prepared by the TIMEWAY TECHNOLOGY DEVELOPMENT LIMITED(HONG KONG) to his customer. Supplier or others persons directly concerned. TIMEWAY TECHNOLOGY DEVELOPMENT LIMITED(HONG KONG) will not, without the consent of the client enter into any discussion of correspondence with any third party concerning the contents of the report.

In the event of the improper use of the report. The TIMEWAY TECHNOLOGY DEVELOPMENT LIMITED(HONG KONG) reserves the rights to withdraw it and to adopt any other remedies which may be appropriate.



Interior View(Tx)



The report refers only to the sample tested and does not apply to the bulk.

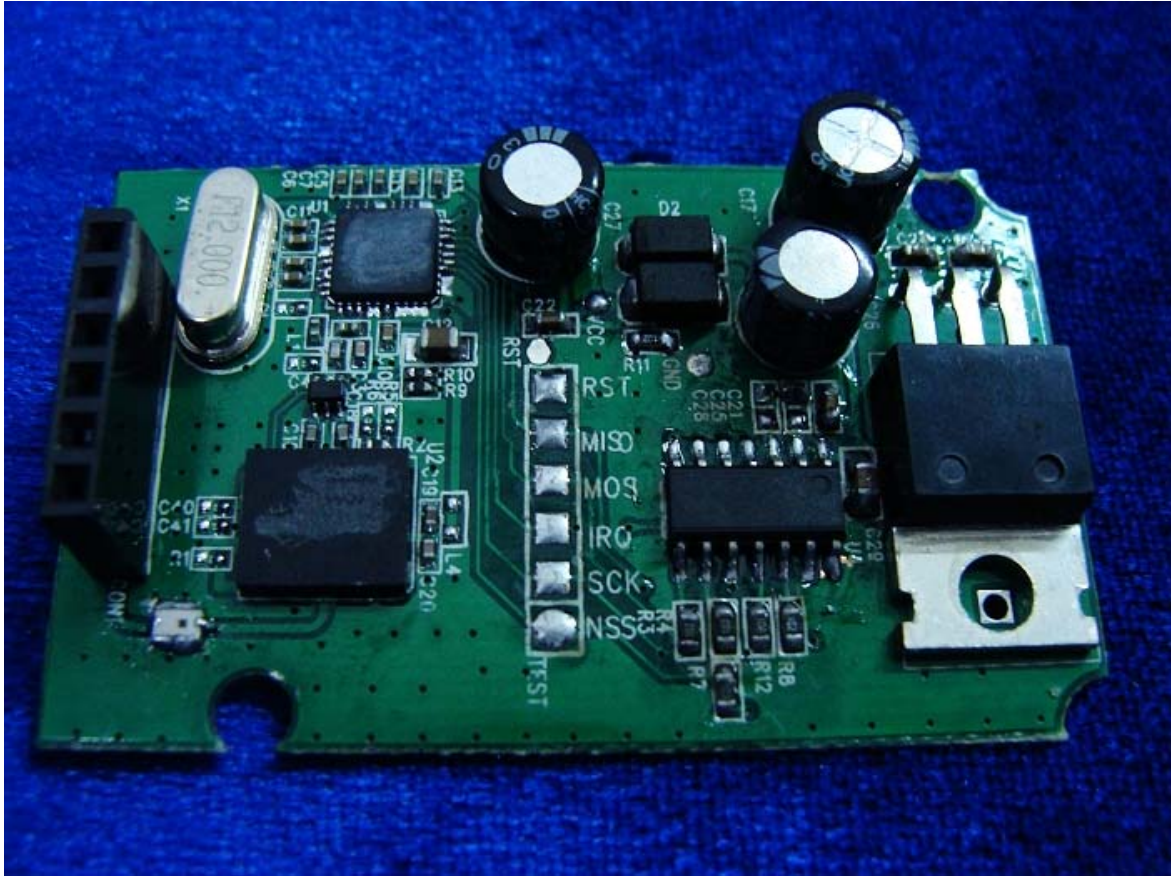
This report is issued in confidence to the client and it will be strictly treated as such by the TIMEWAY TECHNOLOGY DEVELOPMENT LIMITED(HONG KONG). It may not be reproduced rather in its entirety or in part and it may not be used for advertising. The client to whom the report is issued may, however, show or send it or a certified copy thereof prepared by the TIMEWAY TECHNOLOGY DEVELOPMENT LIMITED(HONG KONG) to his customer. Supplier or others persons directly concerned. TIMEWAY TECHNOLOGY DEVELOPMENT LIMITED(HONG KONG) will not, without the consent of the client enter into any discussion of correspondence with any third party concerning the contents of the report.

In the event of the improper use of the report. The TIMEWAY TECHNOLOGY DEVELOPMENT LIMITED(HONG KONG) reserves the rights to withdraw it and to adopt any other remedies which may be appropriate.





Interior View (Tx)



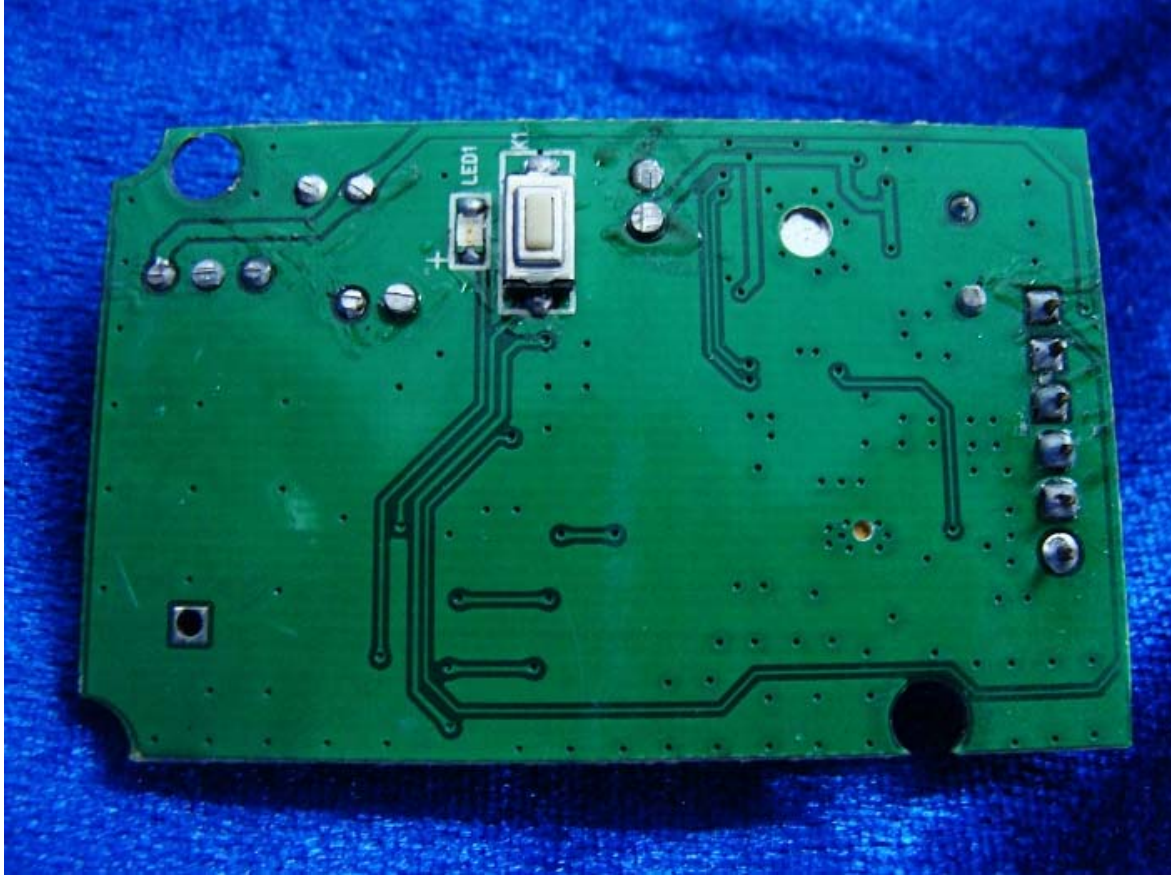
The report refers only to the sample tested and does not apply to the bulk.

This report is issued in confidence to the client and it will be strictly treated as such by the TIMEWAY TECHNOLOGY DEVELOPMENT LIMITED(HONG KONG). It may not be reproduced rather in its entirety or in part and it may not be used for advertising. The client to whom the report is issued may, however, show or send it . or a certified copy there of prepared by the TIMEWAY TECHNOLOGY DEVELOPMENT LIMITED(HONG KONG) to his customer. Supplier or others persons directly concerned. TIMEWAY TECHNOLOGY DEVELOPMENT LIMITED(HONG KONG) will not, without the consent of the client enter into any discussion of correspondence with any third party concerning the contents of the report.

In the event of the improper use of the report. The TIMEWAY TECHNOLOGY DEVELOPMENT LIMITED(HONG KONG) reserves the rights to withdraw it and to adopt any other remedies which may be appropriate.



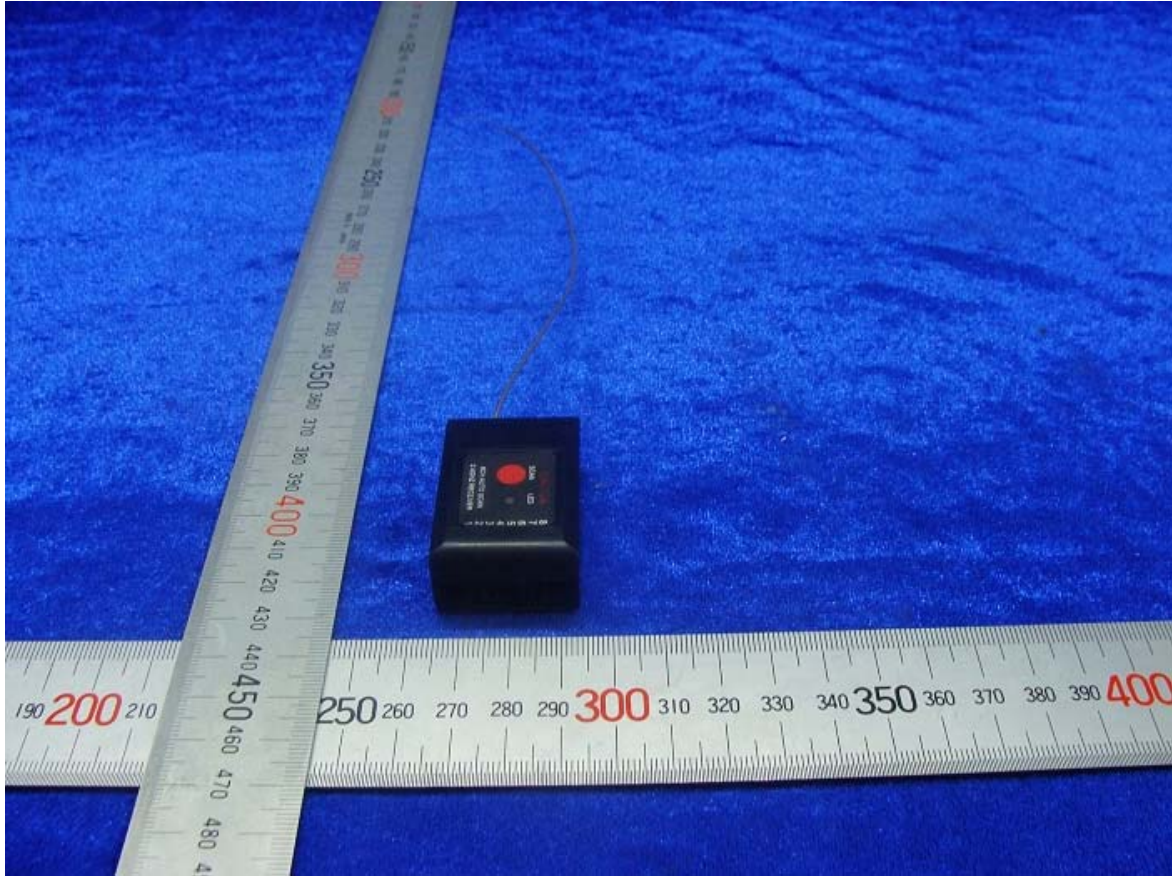
Interior View (Tx)



The report refers only to the sample tested and does not apply to the bulk.

This report is issued in confidence to the client and it will be strictly treated as such by the TIMEWAY TECHNOLOGY DEVELOPMENT LIMITED(HONG KONG). It may not be reproduced rather in its entirety or in part and it may not be used for adverting. The client to whom the report is issued may, however, show or send it . or a certified copy there of prepared by the TIMEWAY TECHNOLOGY DEVELOPMENT LIMITED(HONG KONG) to his customer. Supplier or others persons directly concerned. TIMEWAY TECHNOLOGY DEVELOPMENT LIMITED(HONG KONG) will not, without the consent of the client enter into any discussion of correspondence with any third party concerning the contents of the report.

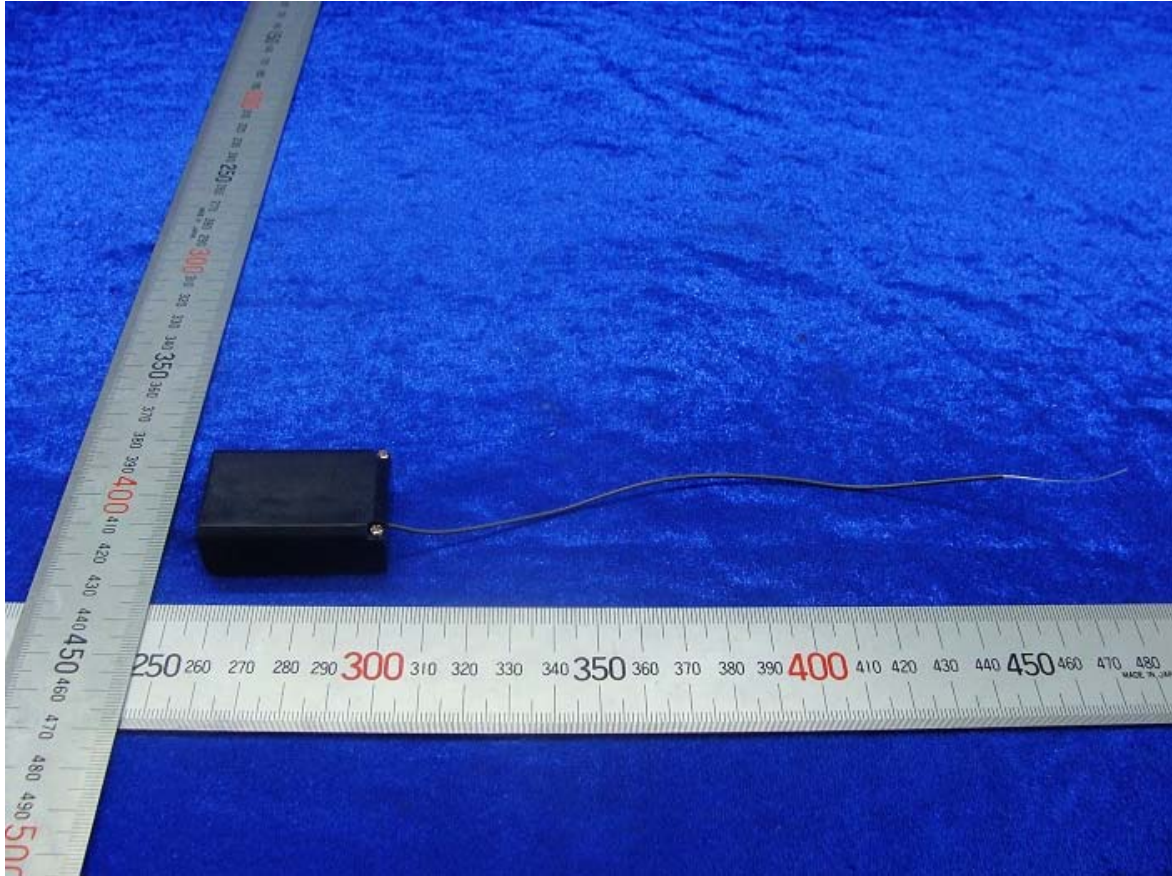
In the event of the improper use of the report. The TIMEWAY TECHNOLOGY DEVELOPMENT LIMITED(HONG KONG) reserves the rights to withdraw it and to adopt any other remedies which may be appropriate.



The report refers only to the sample tested and does not apply to the bulk.

This report is issued in confidence to the client and it will be strictly treated as such by the TIMEWAY TECHNOLOGY DEVELOPMENT LIMITED(HONG KONG). It may not be reproduced rather in its entirety or in part and it may not be used for advertizing. The client to whom the report is issued may, however, show or send it . or a certified copy there of prepared by the TIMEWAY TECHNOLOGY DEVELOPMENT LIMITED(HONG KONG) to his customer. Supplier or others persons directly concerned. TIMEWAY TECHNOLOGY DEVELOPMENT LIMITED(HONG KONG) will not, without the consent of the client enter into any discussion of correspondence with any third party concerning the contents of the report.

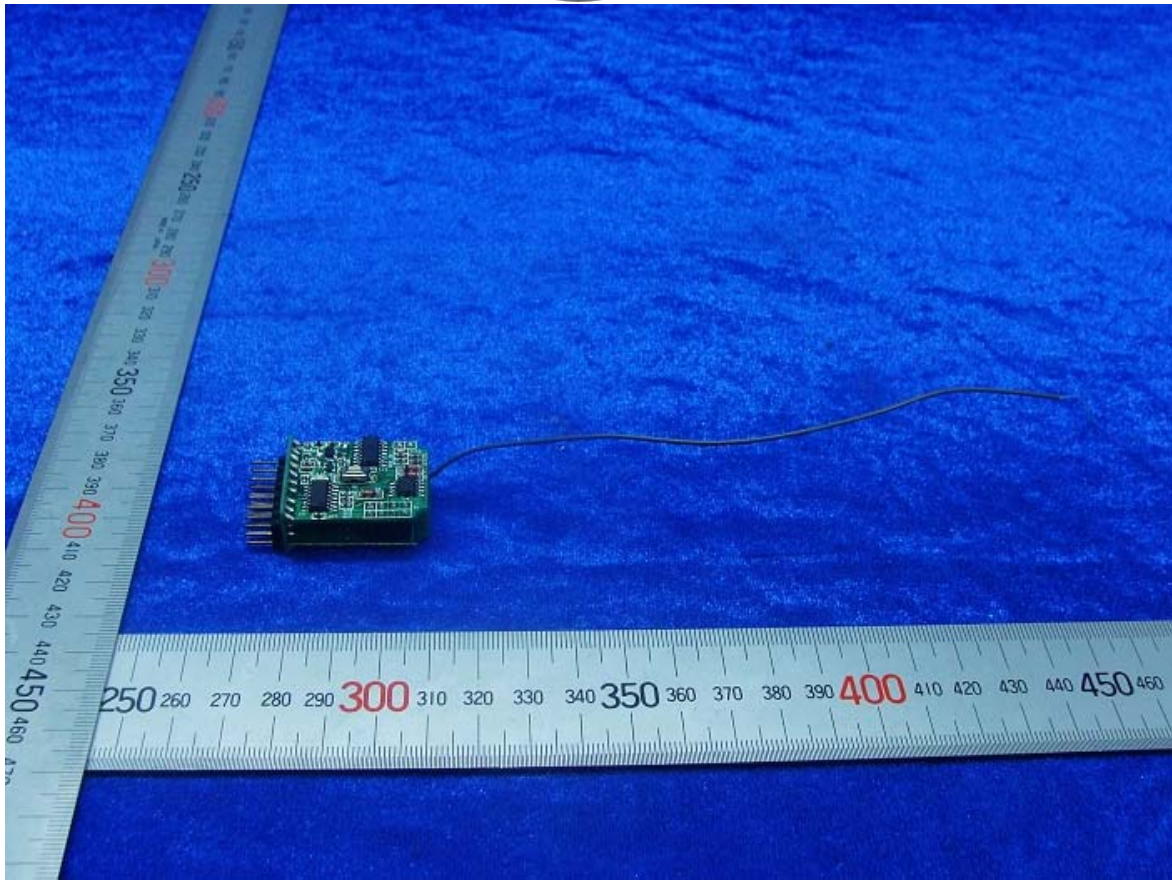
In the event of the improper use of the report. The TIMEWAY TECHNOLOGY DEVELOPMENT LIMITED(HONG KONG) reserves the rights to withdraw it and to adopt any other remedies which may be appropriate.



The report refers only to the sample tested and does not apply to the bulk.

This report is issued in confidence to the client and it will be strictly treated as such by the TIMEWAY TECHNOLOGY DEVELOPMENT LIMITED(HONG KONG). It may not be reproduced rather in its entirety or in part and it may not be used for adverting. The client to whom the report is issued may, however, show or send it . or a certified copy there of prepared by the TIMEWAY TECHNOLOGY DEVELOPMENT LIMITED(HONG KONG) to his customer. Supplier or others persons directly concerned. TIMEWAY TECHNOLOGY DEVELOPMENT LIMITED(HONG KONG) will not, without the consent of the client enter into any discussion of correspondence with any third party concerning the contents of the report.

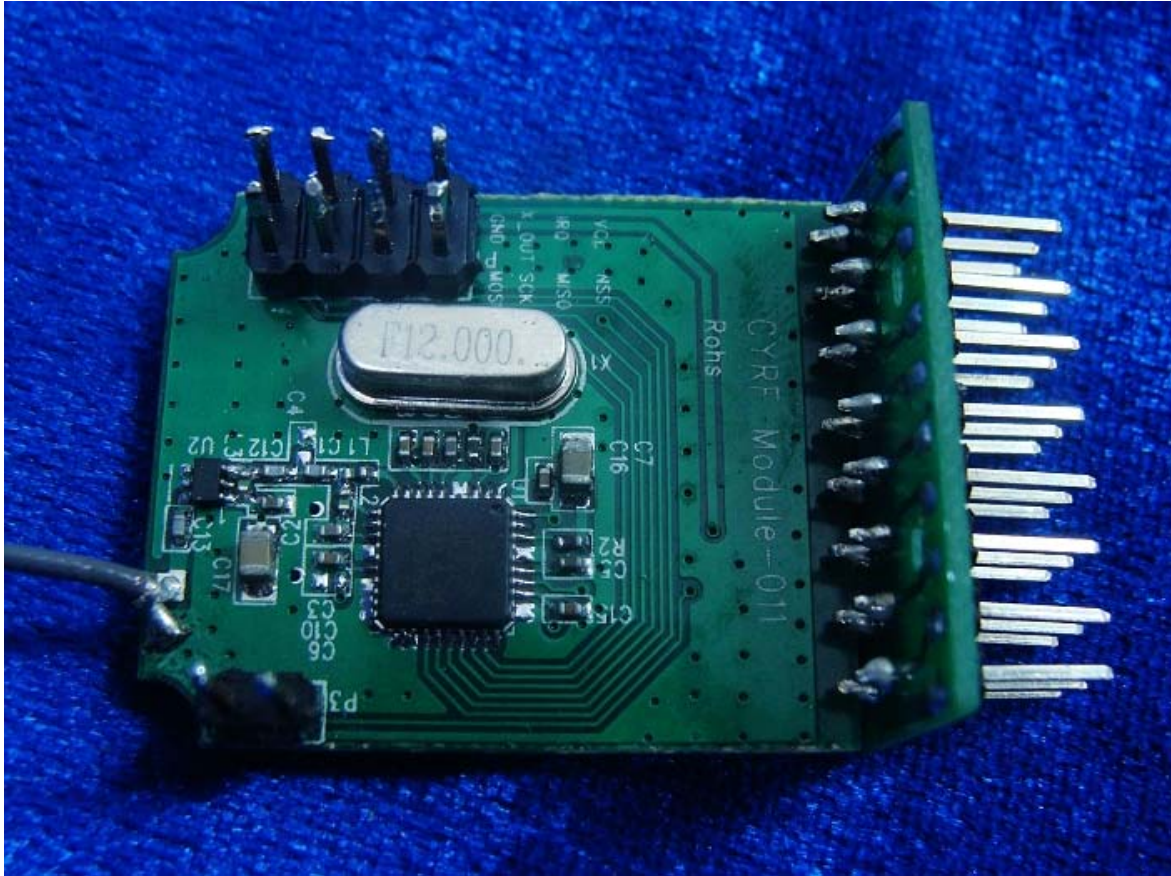
In the event of the improper use of the report. The TIMEWAY TECHNOLOGY DEVELOPMENT LIMITED(HONG KONG) reserves the rights to withdraw it and to adopt any other remedies which may be appropriate.



The report refers only to the sample tested and does not apply to the bulk.

This report is issued in confidence to the client and it will be strictly treated as such by the TIMEWAY TECHNOLOGY DEVELOPMENT LIMITED(HONG KONG). It may not be reproduced rather in its entirety or in part and it may not be used for advertizing. The client to whom the report is issued may, however, show or send it . or a certified copy there of prepared by the TIMEWAY TECHNOLOGY DEVELOPMENT LIMITED(HONG KONG) to his customer. Supplier or others persons directly concerned. TIMEWAY TECHNOLOGY DEVELOPMENT LIMITED(HONG KONG) will not, without the consent of the client enter into any discussion of correspondence with any third party concerning the contents of the report.

In the event of the improper use of the report. The TIMEWAY TECHNOLOGY DEVELOPMENT LIMITED(HONG KONG) reserves the rights to withdraw it and to adopt any other remedies which may be appropriate.



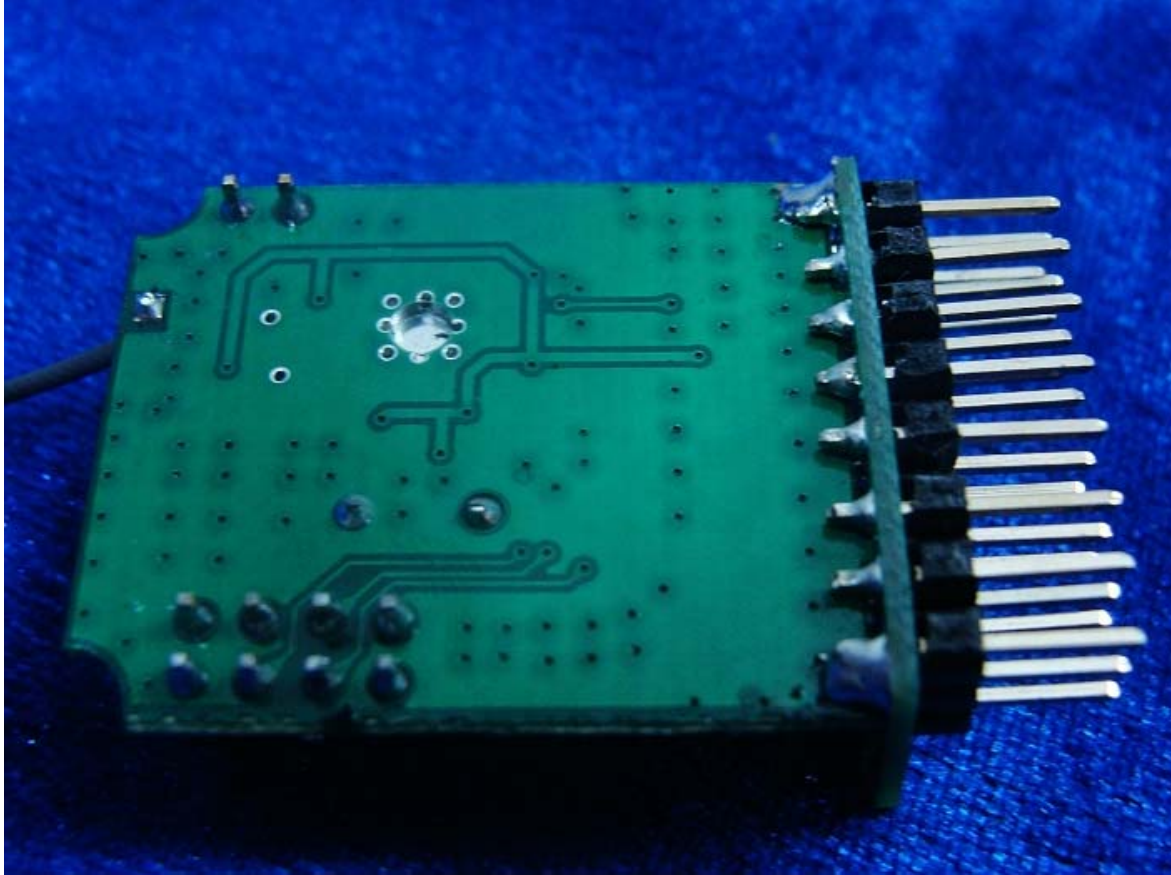
The report refers only to the sample tested and does not apply to the bulk.

This report is issued in confidence to the client and it will be strictly treated as such by the TIMEWAY TECHNOLOGY DEVELOPMENT LIMITED(HONG KONG). It may not be reproduced rather in its entirety or in part and it may not be used for adverting. The client to whom the report is issued may, however, show or send it . or a certified copy there of prepared by the TIMEWAY TECHNOLOGY DEVELOPMENT LIMITED(HONG KONG) to his customer. Supplier or others persons directly concerned. TIMEWAY TECHNOLOGY DEVELOPMENT LIMITED(HONG KONG) will not, without the consent of the client enter into any discussion of correspondence with any third party concerning the contents of the report.

In the event of the improper use of the report. The TIMEWAY TECHNOLOGY DEVELOPMENT LIMITED(HONG KONG) reserves the rights to withdraw it and to adopt any other remedies which may be appropriate.



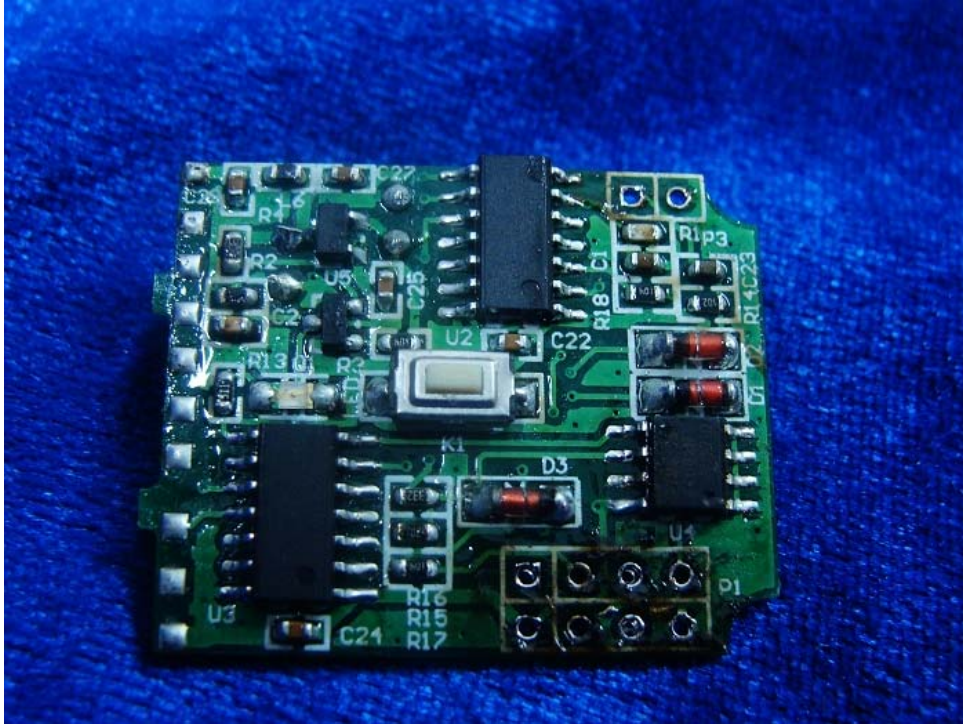
Rx



The report refers only to the sample tested and does not apply to the bulk.

This report is issued in confidence to the client and it will be strictly treated as such by the TIMEWAY TECHNOLOGY DEVELOPMENT LIMITED(HONG KONG). It may not be reproduced rather in its entirety or in part and it may not be used for advertising. The client to whom the report is issued may, however, show or send it . or a certified copy there of prepared by the TIMEWAY TECHNOLOGY DEVELOPMENT LIMITED(HONG KONG) to his customer. Supplier or others persons directly concerned. TIMEWAY TECHNOLOGY DEVELOPMENT LIMITED(HONG KONG) will not, without the consent of the client enter into any discussion of correspondence with any third party concerning the contents of the report.

In the event of the improper use of the report. The TIMEWAY TECHNOLOGY DEVELOPMENT LIMITED(HONG KONG) reserves the rights to withdraw it and to adopt any other remedies which may be appropriate.



The report refers only to the sample tested and does not apply to the bulk.

This report is issued in confidence to the client and it will be strictly treated as such by the TIMEWAY TECHNOLOGY DEVELOPMENT LIMITED(HONG KONG). It may not be reproduced in its entirety or in part and it may not be used for advertising. The client to whom the report is issued may, however, show or send it or a certified copy thereof prepared by the TIMEWAY TECHNOLOGY DEVELOPMENT LIMITED(HONG KONG) to his customer. Supplier or other persons directly concerned. TIMEWAY TECHNOLOGY DEVELOPMENT LIMITED(HONG KONG) will not, without the consent of the client enter into any discussion of correspondence with any third party concerning the contents of the report.

In the event of the improper use of the report. The TIMEWAY TECHNOLOGY DEVELOPMENT LIMITED(HONG KONG) reserves the rights to withdraw it and to adopt any other remedies which may be appropriate.

**TEST REPORT**

<b>6.0 Test Equipments</b>					
Instrument Type	Manufacturer	Model	Serial No.	Date of Cal.	Due Date
ESPI Test Receiver	ROHDE&SCHWARZ	ESPI 3	100379	2008-12-06	2009-12-05
Absorbing Clamp	ROHDE&SCHWARZ	MDS-21	100126	2008-12-06	2009-12-05
TWO Line-V-NETW	ROHDE&SCHWARZ	EZH3-Z5	100294	2008-12-06	2009-12-05
TWO Line-V-NETW	ROHDE&SCHWARZ	EZH3-Z5	100253	2008-12-06	2009-12-05
Ultra Broadband ANT	ROHDE&SCHWARZ	HL562	100157	2008-12-06	2009-12-05
ESDV Test Receiver	ROHDE&SCHWARZ	ESDV	100008	2008-04-26	2009-04-25
4-WIRE ISN	ROHDE&SCHWARZ	ENY 41	830663/044	2008-02-18	2009-02-17
GG ENY22 Double 2-Wire ISN	ROHDE&SCHWARZ	ENY22	83066/016	2008-02-18	2009-02-17
Impuls-Begrenzer	ROHDE&SCHWARZ	ESH3-Z2	100281	2008-02-18	2009-02-17
System Controller	CT	SC100	-	2008-02-18	2009-02-17
Printer	EPSON	PHOTO EX3	CFNH234850	2008-02-18	2009-02-17
FM-AM Signal Generator	JUNGJIN	SG-150M	389911177	2008-02-18	2009-02-17
Color TV Pattern Generator	PHILIPS	PM5418	LO621747	2008-02-18	2009-02-17
Computer	IBM	8434	1S8434KCE99BLX LO*	-	-
Oscillator	KENWOOD	AG-203D	3070002	2008-02-18	2009-02-17
Spectrum Analyzer	HAMEG	HM5012	-	-	-
Power Supply	LW	APS1502	-	-	-
5K VA AC Power Source	California Instruments	5001iX	56060	2008-02-18	2009-02-17
CDN	EM TEST	CDN M2/M3	-	2008-02-18	2009-02-17
Attenuation	EM TEST	ATT6/75	-	2008-02-18	2009-02-17
Resistance	EM TEST	R100	-	2008-02-18	2009-02-17

The report refers only to the sample tested and does not apply to the bulk.

This report is issued in confidence to the client and it will be strictly treated as such by the TIMEWAY TECHNOLOGY DEVELOPMENT LIMITED(HONG KONG). It may not be reproduced rather in its entirety or in part and it may not be used for advertising. The client to whom the report is issued may, however, show or send it . or a certified copy there of prepared by the TIMEWAY TECHNOLOGY DEVELOPMENT LIMITED(HONG KONG) to his customer. Supplier or others persons directly concerned. TIMEWAY TECHNOLOGY DEVELOPMENT LIMITED(HONG KONG) will not, without the consent of the client enter into any discussion of correspondence with any third party concerning the contents of the report.

In the event of the improper use of the report. The TIMEWAY TECHNOLOGY DEVELOPMENT LIMITED(HONG KONG) reserves the rights to withdraw it and to adopt any other remedies which may be appropriate.

**TEST REPORT**

Electromagnetic Injection Clamp	LITTHI	EM101	35708	2008-02-18	2009-02-17
Inductive Components	EM TEST	MC2630	-	2008-02-18	2009-02-17
Antenna	EM TEST	MS100	-	2008-02-18	2009-02-17
Signal Generator	ROHDE&SCHWARZ	SMT03	100029	2008-02-18	2009-02-17
Power Amplifier	AR	150W1000	300999	2008-02-18	2009-02-17
Field probe	Holiday	HI-6005	105152	2008-02-18	2009-02-17
Bilog Antenna	Chase	CBL6111C	2576	2008-02-18	2009-02-17
Loop Antenna	EMCO	6502	00042960	2008-02-18	2009-02-17
ESPI Test Receiver	ROHDE&SCHWARZ	ESI26	838786/013	2008-02-18	2009-02-17
3m OATS	--	--	N/A	2008-02-18	2009-02-17
Horn Antenna	SCHWARZBECK	BBHA 9170	BBHA9170265	2007-08-16	2008-08-15
Horn Antenna	SCHWARZBECK	BBHA 9120D	9120D-631	2008-04-26	2009-04-25
Discretion temperature exchange metabolic humidity hot cabinet	Guangzhou HaiZhu HanDi test equipment factory	GDJS-500C	2004040	2008/02/20	2009/02/19

**End of the Report**

The report refers only to the sample tested and does not apply to the bulk.

This report is issued in confidence to the client and it will be strictly treated as such by the TIMEWAY TECHNOLOGY DEVELOPMENT LIMITED(HONG KONG). It may not be reproduced either in its entirety or in part and it may not be used for advertising. The client to whom the report is issued may, however, show or send it or a certified copy thereof prepared by the TIMEWAY TECHNOLOGY DEVELOPMENT LIMITED(HONG KONG) to his customer. Supplier or other persons directly concerned. TIMEWAY TECHNOLOGY DEVELOPMENT LIMITED(HONG KONG) will not, without the consent of the client enter into any discussion of correspondence with any third party concerning the contents of the report.

In the event of the improper use of the report. The TIMEWAY TECHNOLOGY DEVELOPMENT LIMITED(HONG KONG) reserves the rights to withdraw it and to adopt any other remedies which may be appropriate.